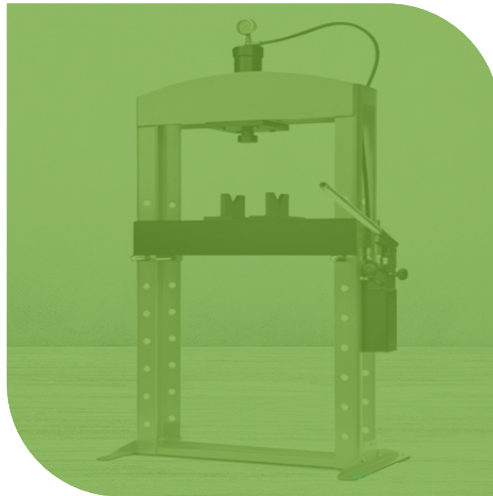
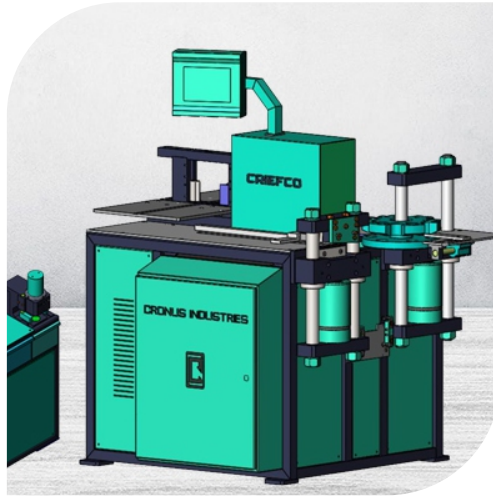




**CRIECCO**  
**CRONUS INDUSTRIES**  
Hydraulic Machinery & Equipment Mfg.





**CRIEFCO**  
**CRONUS INDUSTRIES**  
Hydraulic Machinery & Equipment Mfg.

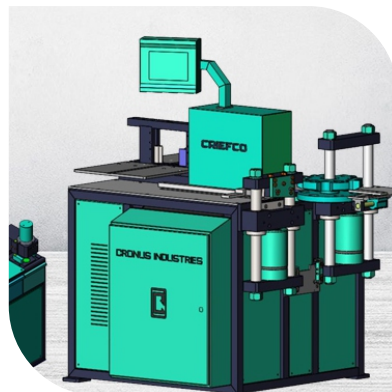
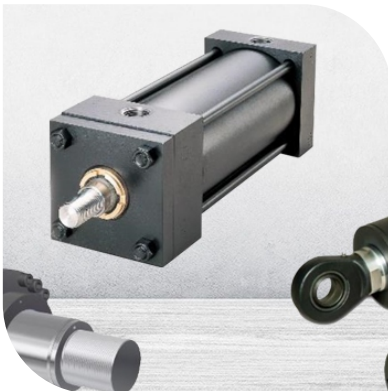
☎ +91-98985 07600

✉ [cronusindustries@hotmail.com](mailto:cronusindustries@hotmail.com)

✉ [cronusindustries@gmail.com](mailto:cronusindustries@gmail.com)

🌐 [www.criefco.com](http://www.criefco.com)

📍 4, Satvam Estate, near Indira Nagar, Vanch -  
Dhamatvan road, Dhamatvan Gam, Daskroi,  
Ahmedabad-382435





# COMPANY PROFILE

Cronus Industries is one of the leading manufacturers of hydraulic press in India. We have an experience of more than 16+ years to design and manufacture different types of hydraulic press.

Started as a small Engineering unit in 2010 we grow to a state-of-the-art manufacturing and assembling facility for different kind of hydraulic press machinery.

## PRODUCT



### HYDRAULIC CYLINDER

#### Product range

40- 800 mm bore capability  
 10-6000 mm stoke capability Pressure up to 700 bar capability

#### Key Features

Industrial Hydraulic Cylinder Manufacturer in India, A hydraulic cylinder (also called a linear hydraulic motor) is a mechanical actuator that is used to give a unidirectional force through a unidirectional stroke. It has many applications, notably in construction equipment (engineering vehicles), manufacturing machinery, elevators, and civil engineering

### 3 IN 1 BUSBAR PROCESSING MACHINE

#### Product Range :

150 x 12 mm capacity  
 200 x 16 mm capacity

#### Key Features

Special punching mold, no pressing marks to the work piece surface  
 Cutting device adopts patent double column structure, smooth cut, no waste, no burr.

Pressing capacity can adjusted according to applied pressing technology.

Double worktable for bending station, real separate working.

Machine has a four caster so it can easily to be moved everywhere. (optional)

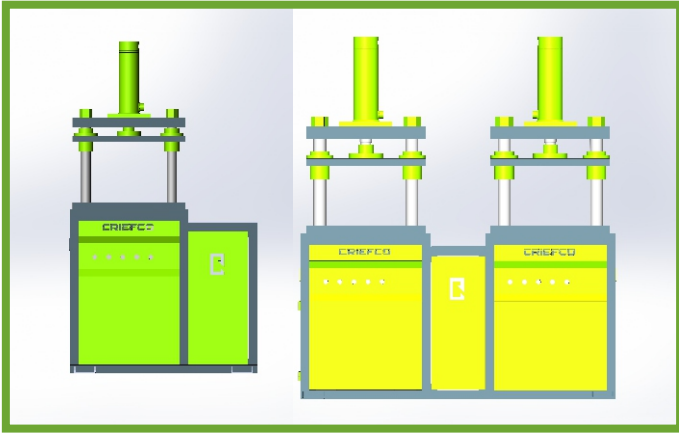


### MANUAL BUSBAR PROCESSING MACHINE

CRIEFCO very solid machine is designed to gives years of reliable work. It has 3 spacers which are used in various combinations to position the copper centrally to the bending block.

#### Product range

- Cutting machine
- Bending machine
- 3 way valve
- Manual pump
- Electro-hydraulic pump



## 2 COLUMN HYDRAULIC PRESS

### Product range

3 ton to 30 ton standard model and SPM model

### Key Features

- Duplex model
- Dual speed control
- Stroke controlled by limit sensor and linear scale
- Plc base panel available
- Heter plate for rubber moulding.
- Customization as per application

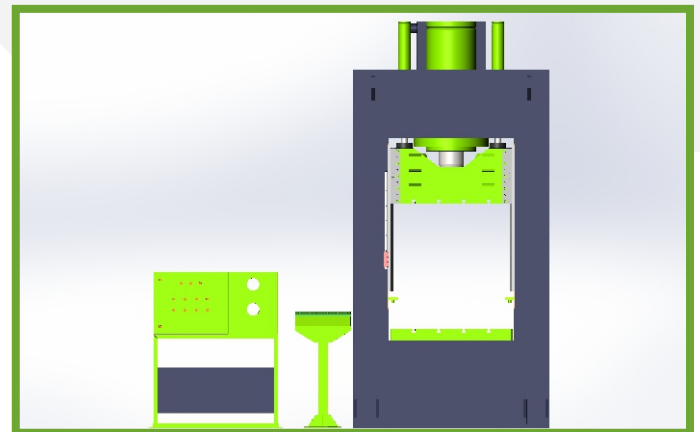
## H FRAME HYDRAULIC MACHINE

### Product Range :

25 ton to 2000 ton standard model and SPM model

### Key Features

- Duplex model
- Dual speed control
- Stroke controlled by limit sensor and linear scale
- Plc base panel available
- Heter plate for rubber moulding.
- Double action and die splitting option.
- Superior guiding system.
- Customization as per application



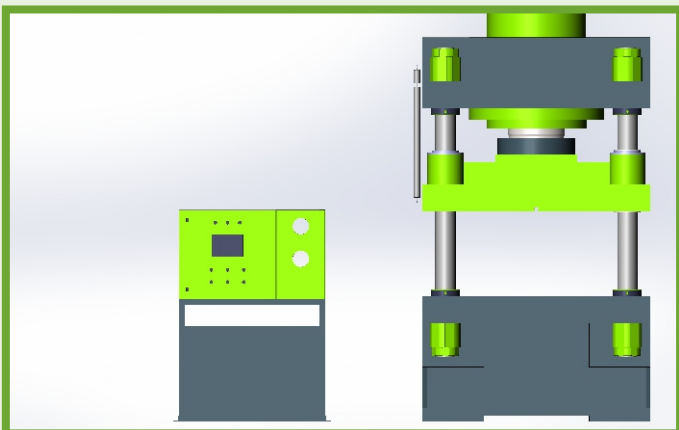
## 4 COLUMN HYDRAULIC PRESS MACHINE

### Product range

25 ton to 2000 ton standard model and SPM model

### Key Features

- Dual speed control
- Stroke controlled by limit sensor and linear scale
- Plc base panel available
- Heter plate for rubber moulding.
- Double action and die splitting option.
- Superior guiding system.
- Customization as per application





## 'C' TYPE HYDRAULIC MACHINES

### Product range

5 ton to 200 ton standard model and SPM model

### Key Features

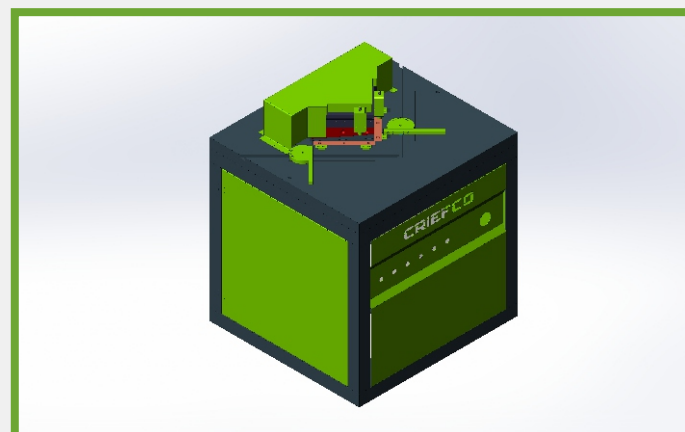
- Dual speed control
- Stroke controlled by limit sensor and linear scale
- Plc base panel available
- 2-point grib guide
- Customization as per application

## SHEET METAL NOCHING MACHINE

2-8mm THK and 150x1500 to 300x300 mm Cutting capacity

### Key Features

- 90°fixed-angle cutting
- Positioning device of variable-angle-bit
- Centralized lubricating system
- Compact structure, mechanical structure ensures the machine rigidity, with solid guide to ensure the best cutting accuracy and the cutter life.



## HYDRAULIC HORIZONTAL BALER

### Product Range :

100 kg to 1000 kg bale capacity.

### Key Features

Electric Controlled : for easy operation, simply by operating on buttons and switches to fulfill platen moving and bale ejecting.  
Hydraulic-driven Exit Door : can automatically lifting up to let the bales come out, which promotes operation efficiency and maximize output.

- Automatic Feeding Conveyor is Optional : for achieving continuous & automatic material feeding to maximize throughput and save labor. The conveyor can automatically start or stop according to material level in hopper.
- Horizontal Cutter on Feeding Aperture : for cutting off the excessive material to prevent it from getting stuck at the feeding aperture
- Automatic Bale Ejecting System : for efficient bale ejecting by simply pressing a button
- Close-end Design : ensures very dense bales especially for baling hollow products.
- Bale Exit Island : for receiving bales ejected from the machine and allowing bales to be easily removed with forklift.
- PLC Control System. : automates the operation and promotes accuracy



## HYDRAULIC VERTICAL BALING PRESS

### Product range

5 ton to 200 ton standard model and SPM model

### Key Features

- Dual speed control
- Stoke controlled by limit sensor and linear scale
- Plc base panel available
- 2-point grib guide
- Customization as per application

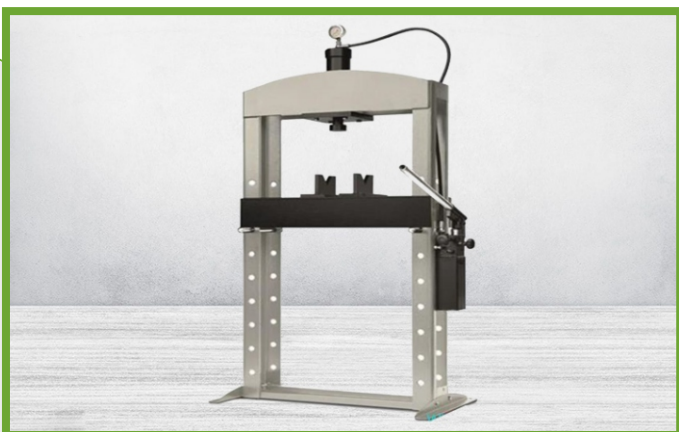
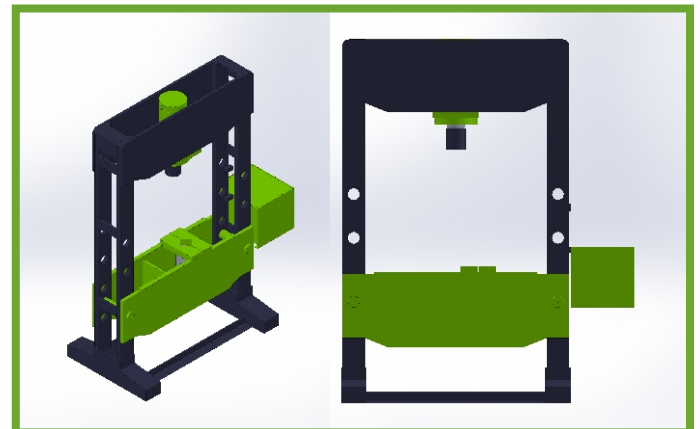
## ELECTRO-HYDRAULIC WORKSHOP PRESS

### Product Range :

Available 10 ton to 150-ton capacity

### Key Features

- Hydraulic ram through adjustable press table.
- Heavy duty cylinder
- V blocks for round bar and pipe straightening.
- High efficiency power pack.
- The pressure can be set to any required tonnage.



## MANUAL-HYDRAULIC WORKSHOP PRESS

### Product Range :

Available 10 ton to 150-ton capacity

### Key Features

- Hydraulic ram through adjustable press table.
- Heavy duty cylinder
- V blocks for round bar and pipe straightening.
- High efficiency power pack.
- The pressure can be set to any required tonnage.